

# 10-Stage Construction Process

# Stage 0

- Home is released to the field
- Perimeter foundation forms are placed
- Underground plumbing pipes are placed
- Earth under home is treated for termites
- Reinforcing steel is placed for foundation
- Slab is ready to be poured



# Stage 1 - Slab

- The slab is poured
- Reinforcing steel ties the block walls to the slab – every four feet
- Control joints are cut into slab to help control cracking
- Slab is typically 4 inches thick and footers are anywhere from 12 to 18 inches thick



# Stage 1 - Block

- Block is erected
- Beam is poured with concrete to tie in all block
- Tie down straps are placed in the beams to hold trusses



# Stage 1 - Roof

- Trusses are erected and metal strapping secures the trusses from uplift pressures
- Plywood is placed on trusses
- Trusses are reinforced from the inside with lateral bracing



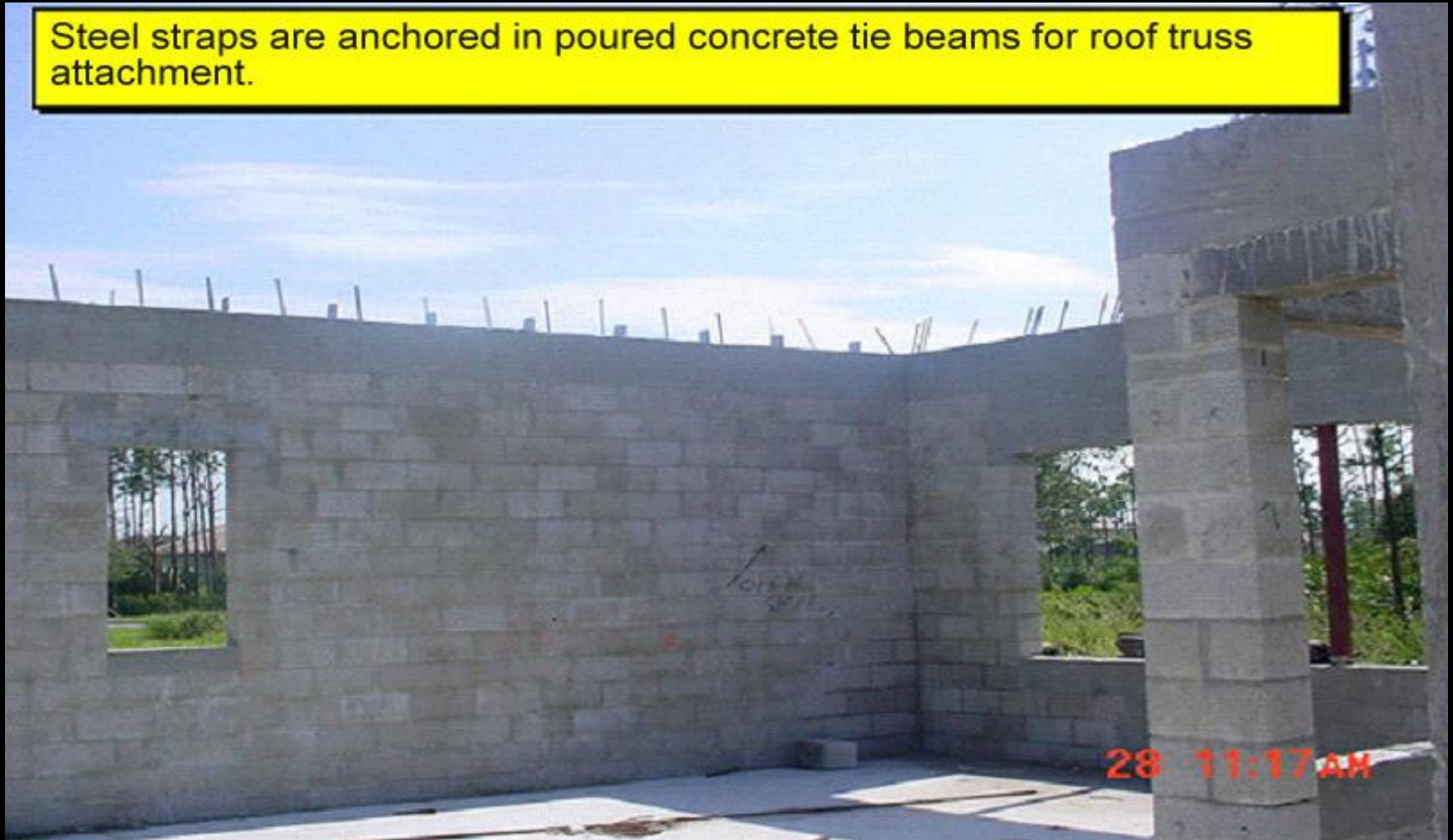
# Stage 1 - Quality Construction



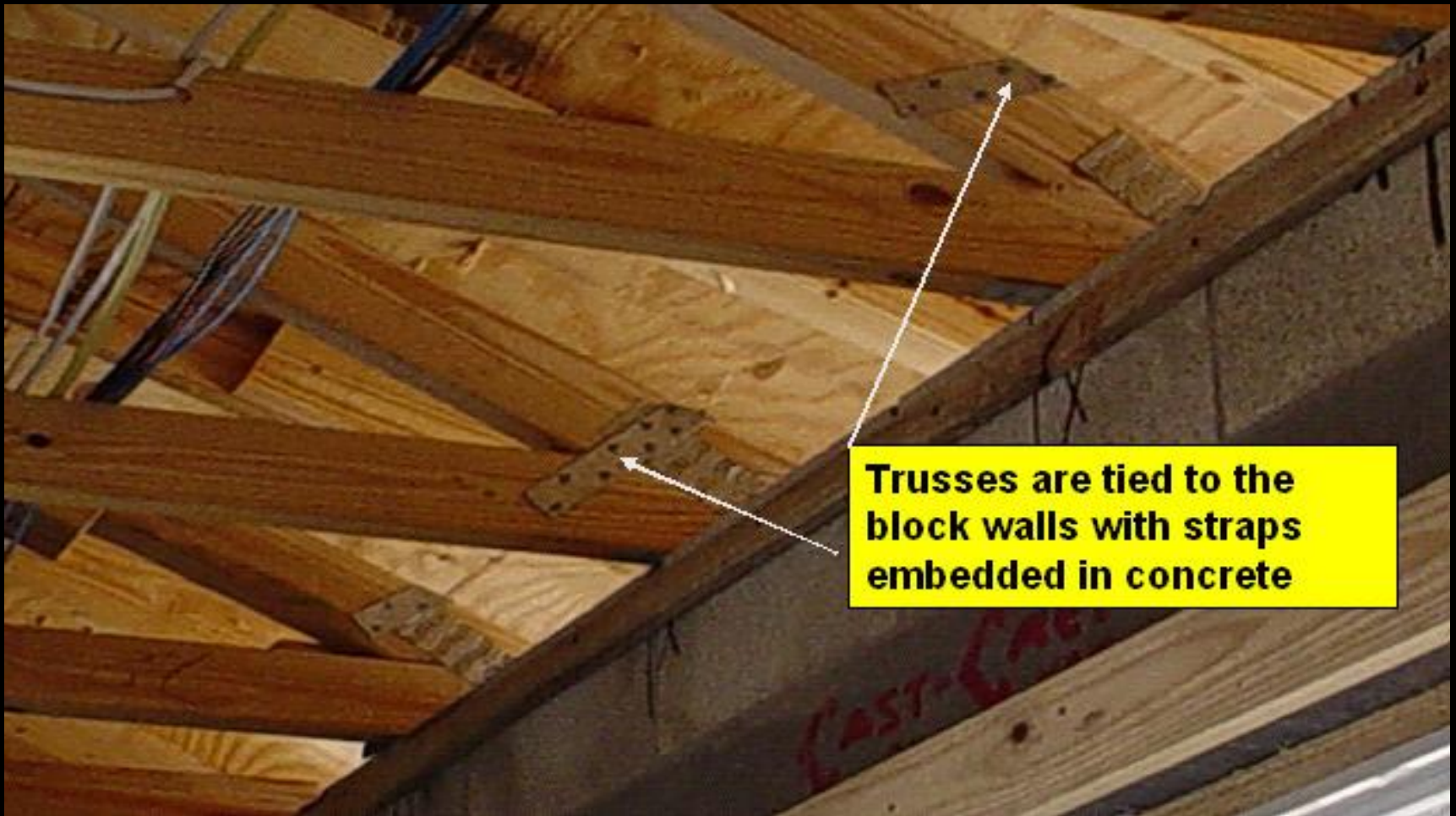
Steel reinforcement in poured concrete beam and columns

# Stage 1 - Quality Construction

Steel straps are anchored in poured concrete tie beams for roof truss attachment.



# Stage 1 - Quality Construction



**Trusses are tied to the block walls with straps embedded in concrete**



# Stage 2 – Interior Framing

- At a stage 2 the interior framing begins
- Typically, WCI uses metal studs to ensure high-quality, straight walls



# Stage 2 - Windows

- Windows are installed with screws that sink into the block wall
- To seal the windows, a urethane sealant is applied between window and block



# Stage 2

- The home's roof structure is complete
- All the hurricane strapping is in place
- The interior framing has begun
- Windows and doors are placed in the home



# Stage 3

- The electrical wiring is placed in the walls
- The plumbing is placed in the walls
- The HVAC system ducts are placed in the attic
  - Typically, construction managers call these “rough-ins”
- All the windows and doors are in the home
  - Depending on the hurricane wind zone, impact glass or shutters are used



# Stage 4 - Inside

- At this crucial stage, the home passes the framing inspection
- The electric, plumbing, and HVAC rough-ins are complete
- The home is ready for the insulation and drywall



# Stage 4 - Outside

- Finish is applied to the exterior walls
- Roof is hot mopped (completely waterproof)
- Roof tile is placed on the roof



# Stage 5 - Inside

- All the drywall is complete
- The drywall has been textured
- The home is clean



# Stage 5 - Outside

- The roof tile is complete
- The exterior painting process begins
- The driveway and walkways are placed





# Stage 6

- The interior trim is placed
- The cabinets are being installed
- The garage door is installed
  - Hurricane codes require that the garage doors withstand wind speeds from 110 to 160 mph – depending on your wind zone
- The floor tile is installed
- The hurricane shutters are installed and inspected



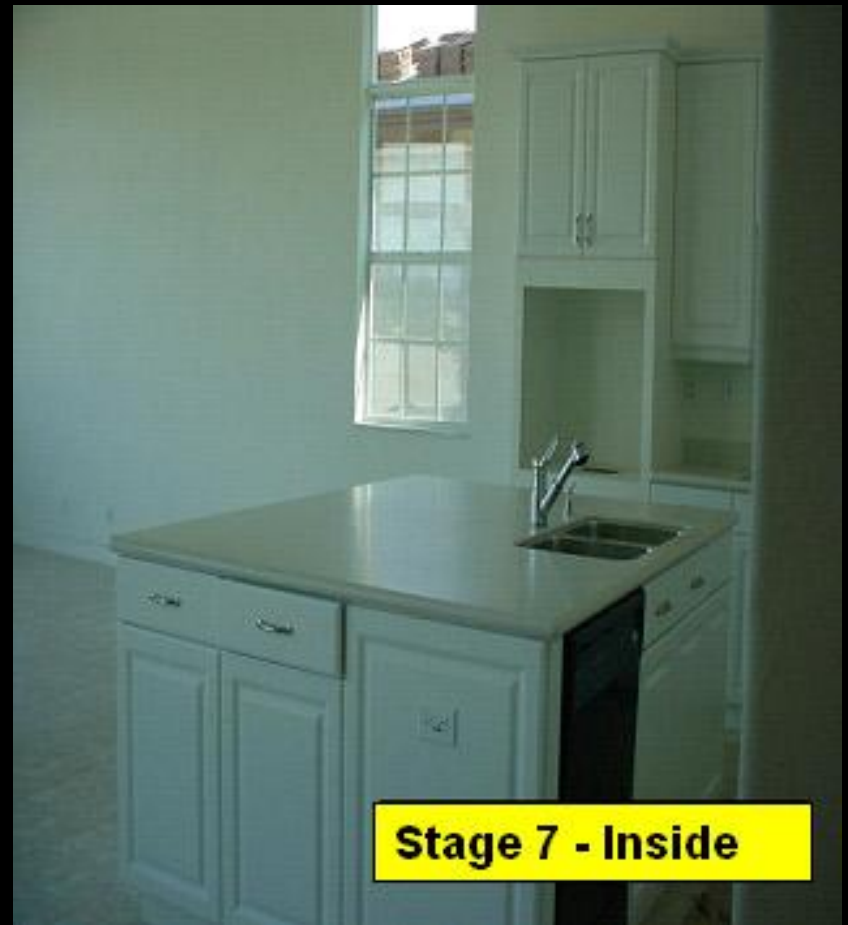
# Stage 7 – Garage Doors

- The garage doors are installed after the home is painted
- The horizontal bracing is specifically designed to reduce the impact of hurricane-force winds



# Stage 7 - Inside

- All the counter tops are installed
- Interior paint is complete
- Floor tile is complete
- Bathroom wall tile is complete
- The electrical, HVAC, and plumbing trim out begins



# Stage 7 - Outside

- Exterior paint is complete
- The exterior is graded and is prepared for landscaping



# Stage 8 - Inside

- The plumbing trim is complete
- The electrical trim is complete
- The HVAC system and trim is complete
- Minor cosmetic items are corrected



# Stage 8 - Outside

- Landscaping is complete
- Exterior paint is touched up
- Cleaning process begins



# Stage 9

- Appliances are installed
- Carpet is installed
- The home has power
- The final building inspection has been performed
- The home is cleaned
- The home is ready for the customer
- The homeowner orientation is performed



# Stage 10

- The home is complete
- This means all items on the customers orientation list are completed and the home is under warranty

